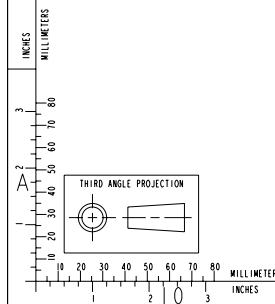


REVISIONS		OWN	APP'D
00	RELEASED	985	4/28/98

ITEM NUMBER
4953730

OPTION LIST
AC2039
AD2056
BR2049
DA2108
DF2032
EE2071
EH2137
EH2715
EM2064
FF2205
FH2156
FS2023
FW2195
HX2003
LF2058
LG2039
OB2435
OC2007
OP2138
PU2006
RG2008
SA2008
ST2025
SW2002
TB2335
VB2007
VC2111
WF2083
XS2069



ENGINE SERVICE TEST PORTS/INSTALLATION CONNECTIONS					
1	AUXILIARY HEATER RETURN:	[3/4 NPT][1/2 NPT]	9	ENGINE OIL DRAIN FRONT:	[1-18 UN]
2	AUXILIARY HEATER SUPPLY:	6X [1/2 NPT]	10	ENGINE OIL DRAIN REAR:	N/A
3	BATTERY CONNECTION (STARTER) (+):	M12 X 1.75	11	ENGINE OIL FILL:	Ø50.8 ID [2.0]
4	BATTERY CONNECTION (STARTER) (-):	M12 X 1.75	12	EXHAUST OUTLET CONNECTION (ELBOW):	Ø203.2 [8.0] O.D.
5	BATTERY CONNECTION (ECM) (+):	[1/4-20 UNC]	13	EXHAUST OUTLET CONNECTION (TURBO):	Ø127 [5.0] MARMON FLANGE
6	BATTERY CONNECTION (ECM) (-):	[1/4-20 UNC]	14	EXHAUST TEMPERATURE/BACK PRESSURE:	[1/8 NPT]
7	COOLANT FILL:	Ø30 [1.18]	15	FRONT ENGINE SUPPORT:	2X Ø28 [1.1] X 62.6 [2.5] SLOT
8	COOLANT RECOVERY/OVERFLOW CONNECTION:	Ø8.39 [.33]	16	FUEL RETURN TO TANK CONNECTION:	[1/2 NPT]
			17	FUEL INLET CONNECTION	[7/8-14 UN], (#8 HOSE)
			18	GEAR OIL COOLER DRAIN:	[1/8 NPT]
			19	GEAR OIL COOLER INLET AND OUTLET:	2X [1/2 NPT] 2X [3/8 NPT]
			20	OIL HEATER CONNECTION:	[1/2 NPT]
			21	SEA WATER INLET:	Ø63.5 [2.50]
			22	SEA WATER OUTLET:	Ø50.8 [2.00]
			23	SHAFT LOG SEA WATER SUPPLY:	[3/8 NPT]
			24	ZINC ANODE:	3X [1/2 NPT], 1X [3/8 NPT]

PRODUCT GRAPHICS FILE
 NO ORIGINAL DRAWING EXISTS FOR THIS ITEM. THE ENGINEERING GRAPHICS DATA FOR THIS ITEM RESIDES IN THE PRODUCT GRAPHICS FILE AND IS CONTROLLED BY THE AGENCY DESIGNATED AS HAVING ITEM CONTROL.

LAST SECTION LETTER USED: A	REF. DRAWING STANDARDS: ANSI Y14.5M ISO 81101	ITEM NAME CUMMINS INC.
UNLESS OTHERWISE SPECIFIED, DIMENSIONS ARE IN: MILLIMETERS () ARE IN: INCHES	IDENTIFIER QSM11 (610,645,670,715)W/ ZF325A	SIZE CODE (IDENT. NO.) ITEM NUMBER J 4953730
DWN: D. SOMVIN CHD: UNCHECKED APPD: UNCHECKED	SCALE: 2X	ITEM CONTROL: MCS SHEET 1 OF 1

DO NOT SCALE THIS DRAWING
 THIS DRAWING/DATA FILE (AND THE INFORMATION SHOWN THEREON) IS CONFIDENTIAL AND PROPRIETARY AND SHALL NOT BE USED, DISCLOSED TO OTHERS, OR REPRODUCED BY ANY MEANS FOR ANY PURPOSE IN HARD COPY FORM OR IN MACHINE READABLE FILES, WITHOUT WRITTEN CONSENT OF CUMMINS INC., MARKETING CAD SERVICES DEPARTMENT.